



FAST CREW SUPPLIER 7011

AQUA HELIX



GENERAL

| | |
|-------------------------|--------------------------------------------------------------------------------|
| Yard number | 547701 |
| Hull material | Aluminium |
| Superstructure material | Aluminium |
| Basic functions | Fast Marine Access, Crew transfer |
| Classification | Bureau Veritas I ✕ Hull ✕ MACH, HSC-code-Cat A, Dynapos AM R, Sea Area 3 |

DIMENSIONS

| | |
|------------------------|----------------------|
| Length overall | 73.6 m |
| Beam overall | 11.2 m |
| Depth at side | 5.5 m |
| Draught max. | 4.5 m |
| Deadweight max | 105.0 t |
| Cargo deck area (fore) | 35.0 m ² |
| Deck load | 2.5 t/m ² |
| Gross tonnage | 1366 |
| Crew | 11 persons |
| (Industrial) personnel | 120 persons |

TANK CAPACITIES

| | |
|-------------------------|---------------------|
| Fuel oil | 70.0 m ³ |
| Fresh water | 11.0 m ³ |
| Sewage | 11.5 m ³ |
| Bilge water / dirty oil | 6.0 m ³ |

PERFORMANCES

| | |
|---------------------|----------------------------------|
| Speed | 40.0 kn |
| Range at max speed | 650 nm |
| Dynamic Positioning | Kongsberg DP2 ERN* (99,98,91,91) |

PROPULSION SYSTEM

| | |
|---------------|-----------------------------------------------|
| Main engines | 4x MTU 20V4000 M73L |
| Total Power | 14,400 bkW |
| Gearboxes | 4x Reintjes VLJ 1930 |
| Propulsion | 4x Waterjet Hamilton HT900 |
| Bow thrusters | 2x 426 ekW, retractable 1x 250 ekW, tunnel |

ELECTRICAL EQUIPMENT

| | |
|-------------------------|------------------------------------------------------|
| Network | 700V DC, 24V DC, 440V 60Hz AC, 400/230V 50Hz A.C. |
| Generator | 4x 450 ekW, main engine driven |
| Emergency generator set | 1x 95 ekW |

COMFORT ENHANCING EQUIPMENT

| | |
|----------------|-------------------------------------|
| Roll reduction | 1x Gyroscope, VEEM VG 1000 |
| Ride control | Active Interceptors, Naiad Dynamics |

DECK LAY-OUT

| | |
|------------------------|-------------------------------------------------------------------------------------------------------------------------|
| Anchor equipment | 1x HHP Pool TW, chain, electric winch |
| Davit and rescue craft | |
| Marine access system | Ampelmann motion compensated gangway, electro hydraulically driven hexapod, continuous access up to 18m above sea level |

SHIP SYSTEMS

| | |
|-------------------------------------|-------------------------------------------------------|
| Ship systems are according to Class | |
| Fuel filtration | 2x Static filter system and pump |
| Engine room ventilation | 2x Extraction fan, 36,000 m ³ /hr in total |
| Air-conditioning | 785,000 BTU/hr |
| Fire extinguishing | Novac 1230 in engine room, sprinkler in accommodation |

ACCOMMODATION

| | |
|----------------------|--------------------------------------------------------------|
| Bridge deck | Wheelhouse |
| 1 st Deck | Personnel area, kiosk and lounge, lobby |
| Main deck | Personnel area, 2x crew cabin, mess/pantry, technical spaces |
| Lower deck | 5x Crew cabin, technical spaces, stores |
| Seats | Business class reclinable seats, pitch 1.4 m |
| Entertainment system | Media server with 9 screens, Wi-Fi |

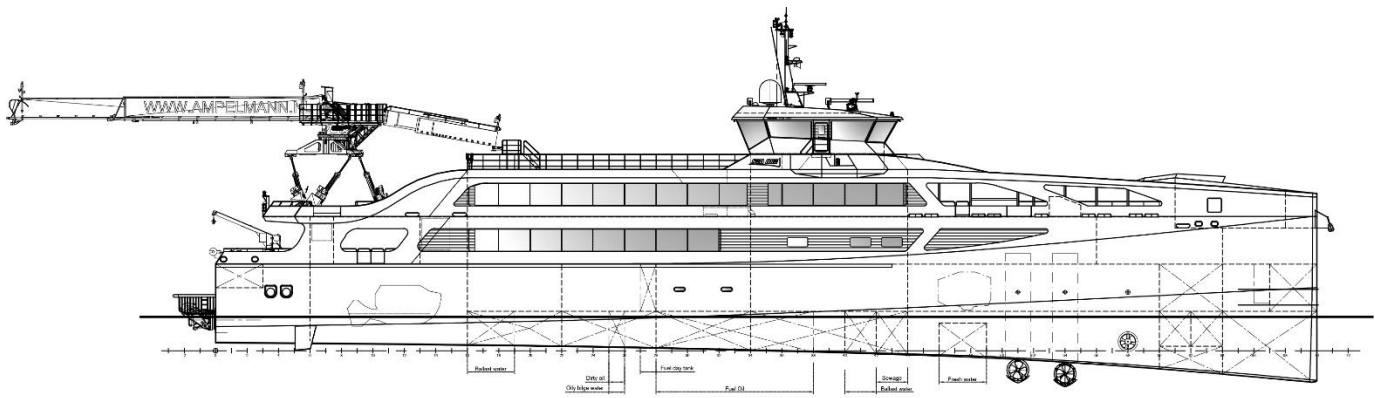
NAUTICAL AND COMMUNICATION EQUIPMENT

| | |
|------------------------------|------------------------------------|
| Integrated navigation system | |
| Remote monitoring system | |
| Searchlight | 2x |
| Radar | 1x X-band, 1x S-band |
| Electronic chart | Dual ECDIS |
| DGPS | 2x |
| AIS | 1x |
| Compass | 3x Gyro |
| Autopilot | 1x |
| Night vision camera | 1x HSC approved |
| Echo sounder | 1x |
| Speedlog | 1x |
| Reference radar | 1x Kongsberg Spot track laser |
| Internal communication | Intercom and public address system |
| CCTV system | 1x |
| External communication | GMDSS A2 |
| Satellite data comm. | 1x V-Sat |
| Wind measurement sys. | 3x |

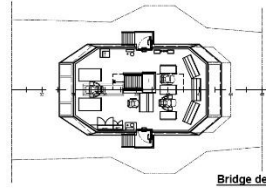
OPTIONAL

| | |
|------------------------|-----------------------------------------------------|
| Personnel accomm. | Alternative arrangement and seat types |
| External communication | GMDSS A3 |
| Data communication | Iridium, 2 nd V-Sat, Fleet broadband, 4G |
| Transfer basket | 1x, up to 10 persons |
| Cold store | |
| Sewage treatment plant | |

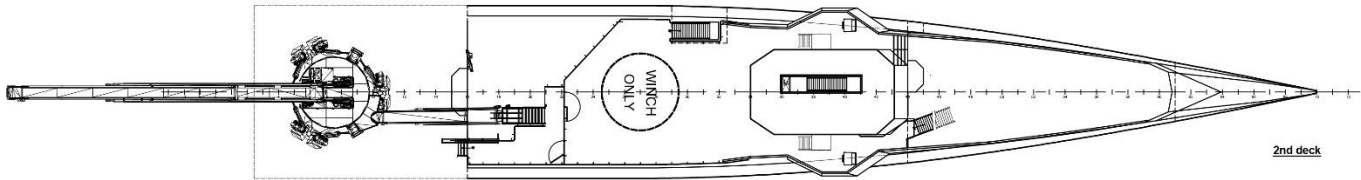
DAMEN



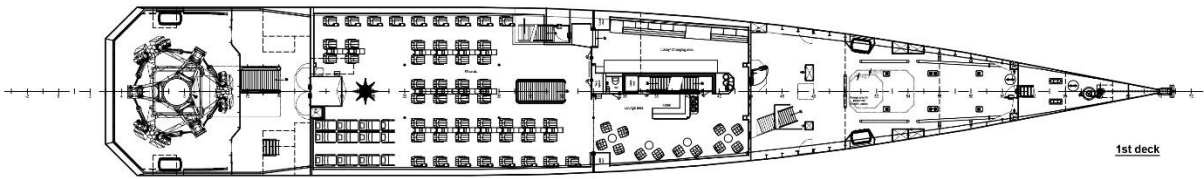
Profile



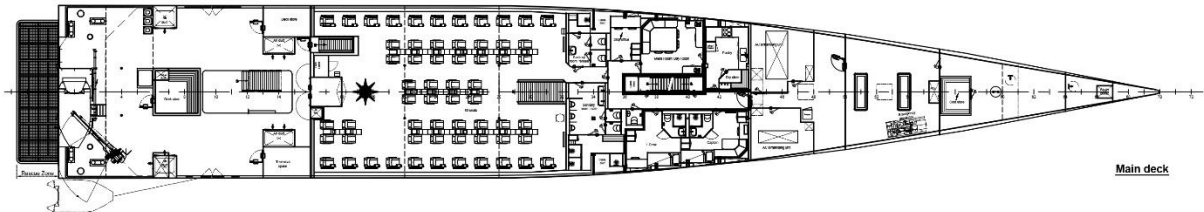
Bridge deck



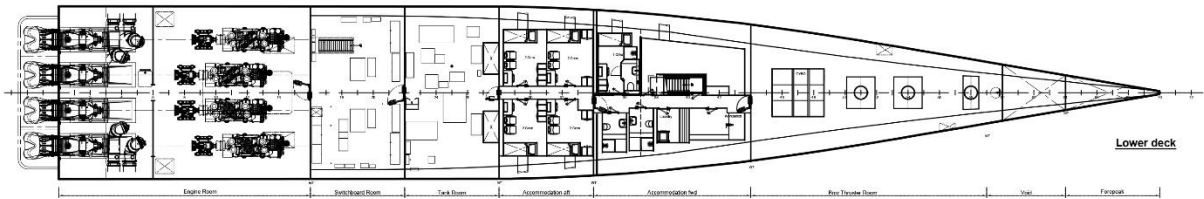
2nd deck



1st deck



Main deck



Lower deck

FAST CREW SUPPLIER 7011

AQUA HELIX

DAMEN

DAMEN SHIPYARDS GROUP

Avelingen-West 20
4202 MS Gorinchem
The Netherlands

P.O. Box 1
4200 AA Gorinchem
The Netherlands

phone +31 (0)183 63 99 22
fax +31 (0)183 63 21 89

info@damen.com
www.damen.com

© No part of the leaflet may be reproduced in any form, by print, photo print, microfilm, or any other means, without written permission from Damen Shipyards Group